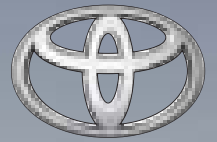


LandCruiser 70 Series



TOYOTA

Still powerful, still indestructible.



toyota.com.au



Oh what a feeling!

Getting the job done. The story of Toyota Commercial Vehicles.



Getting the job done. That's been our motto for more than half a century. No matter the terrain, no matter the weather, no matter the load, our engineers' pursuit of perfection will ensure we meet our mantra. At Toyota, we know that every job matters and we know that the quality, durability and reliability we promise is crucial.

There through thick and thin.

We've done it tough since day one. Back in 1958, on the slopes of the Snowies, our very first LandCruiser was used as a tool for thousands of Snowy Mountain Hydro Scheme workers. It got them to their worksite, and home again, every day. Their back-breaking work on unforgiving and unpredictable land was shouldered by this unbreakable workhorse. No wonder it's known as the 4WD that built Australia.

Now, more than fifty years on, we're still at work building the nation. Our commercial fleet is still getting the job done everywhere and more Australians rely on us than ever before. From cattle drovers to camel catches, boaties to brickies, our quality, durability and reliability is expected.

And still there's work to be done.

We boast the toughest, strongest, and smartest work vehicles ever made, because we've been there before. We work to bring you the best vehicles to tackle the toughest terrain on earth, and we'll continue to evolve and strive to make each Toyota better than the last.

LandCruiser 70 Series

Modern engine,
modern look, the same
legendary strength.



Wagon GXL model shown.
Front Cover: Cab Chassis GXL model shown
with optional Toyota Genuine tray body.

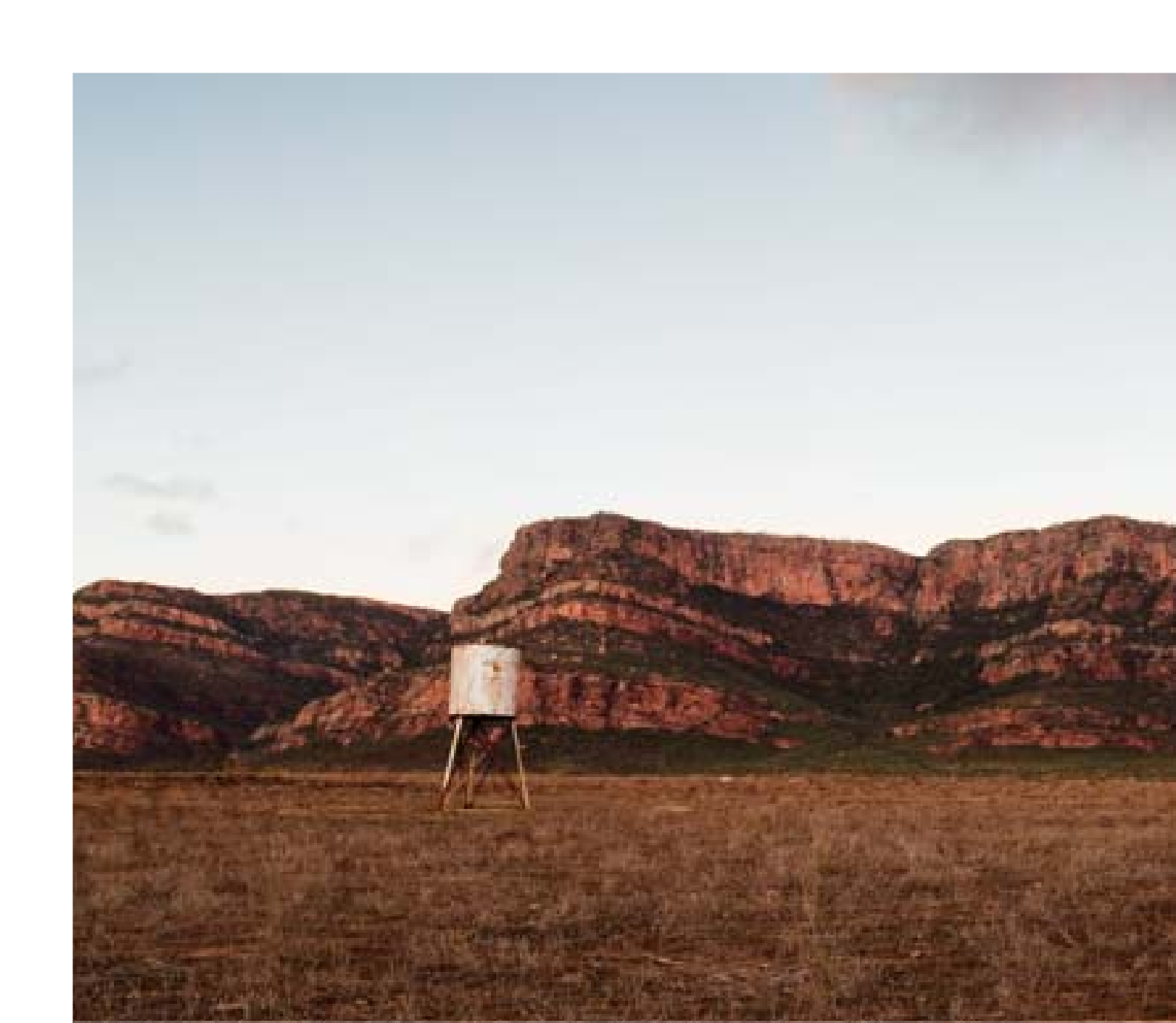
The LandCruiser legend follows a path that leads right back to 1957, to the Snowy Mountains Hydro Scheme to be precise. It was here that the very original LandCruiser began forging a name for itself in Australian folklore and the rest, as they say, is history. As the going got tougher, LandCruiser got stronger. So despite whatever conditions LandCruiser owners put their vehicles through, from the Bass Strait pipeline projects to the roughest rural, mining and construction sites, LandCruiser became the one vehicle you could count on.

The workhorses of the LandCruiser line-up come with muscle and a purposeful look. Known as the LandCruiser 70 Series, they have unbelievable grunt courtesy of Toyota's V8 turbo diesel. This big 4.5 litre turbo diesel delivers an awesome 151kW of power and a massive 430Nm of torque,

whilst offering impressive fuel economy thanks to some clever Toyota thinking. That makes all these LandCruisers work harder in the dirt and run cleaner, getting a big tick from the tough Euro IV emissions laws.

On the outside, the body has real presence - the wide body design is suitably muscular to accommodate the awesome powerplant. LandCruiser 70 Series also delivers on functionality and comfort and is equipped with a host of standard features.

So we're going to tell you everything you need to know about the three LandCruiser 70 Series models. After that, you'd better put one through its paces, on and off-road, to get the complete picture.



**Ready to power
through the
biggest workload.**

This workhorse is powered by Toyota's intercooled V8 turbo diesel, putting LandCruiser even further ahead. With a capacity of 4.5 litres and the latest direct injection multi-valve diesel technology, it's an engine that delivers both remarkable performance and efficiency.

The LandCruiser 70 Series all feature a huge 151kW power output, which makes those tough jobs easier than you ever thought possible. The maximum power of 151kW comes on strong at a low 3,400rpm. With a huge 430Nm of torque all the way from 1,200 – 3,200rpm, you get quick acceleration, pulling-power on steep hills and the power you need when you're carrying a full load. Yet with fuel efficiency of just 11.5 litres/100km for the Cab Chassis and 11.9 litres/100km for



Wagon GXL model shown.

the Troop Carrier and Wagon, LandCruiser 70 Series is one worker that's prepared to do more for less pay¹.

LandCruiser 70's advanced V8 is equipped with a variable vane type turbocharger. That means at low engine speeds you get more instantaneous response with less lag, while at higher revs you get greater power output. Yet it also ensures excellent fuel efficiency and lower emissions. With quad-cams and multi-valves this advanced V8 breathes easier and is more efficient. In addition, the latest electronic fuel injection together with technology like Exhaust Gas Recirculation (EGR) helps it meet the Euro IV emissions rules, so it's a cleaner machine.

The impressive power is easily manageable thanks to LandCruiser 70's proven 5-speed manual transmission with high and low range, giving you the right ratios for climbing steep slopes and carrying heavy loads. A high capacity, high pressure power steering pump makes it easier to manoeuvre for effortless turning at lower speeds.

As for the suspension, LandCruiser 70 has a wide front track with a durable stabiliser bar and lateral control rod. In the rear, the five door Wagon features a higher spring rate, making LandCruiser 70 more stable and easier to drive even when it's loaded to the gunwales.

¹ Fuel consumption will vary depending on driving conditions/style, vehicle condition and options/accessories. Source of fuel consumption data ADR81/02 combined cycle.



Quick Facts

- Economical diesel V8
- 5-speed transmission
- Large 180 litre fuel tank
- 1500km cruising range
- Troop Carrier seats three, five or eleven (depending on model)

Cab Chassis GXL model shown with optional Toyota Genuine tray body.

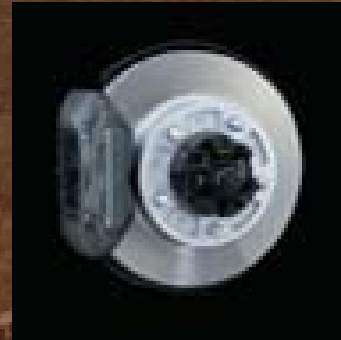
A safe work place.

With the strength of a tough steel body, LandCruiser 70 models help protect you. Underneath that, a full steel chassis also makes for a strong, stable platform.

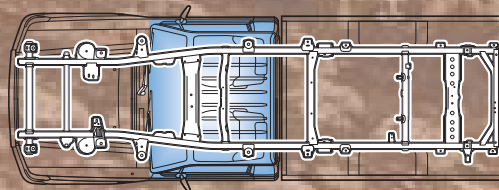
While LandCruiser 70 is all go, big powerful ventilated disc brakes all round slow things down in a hurry. A load sensing and bypass valve manages the front to rear brake balance, providing efficient braking when carrying loads. A collapsible steering column and front outboard headrests have been designed to help provide protection in real life emergency situations whilst side intrusion beams help protect in side collisions. All this safety is furthered by driver and front passenger SRS airbags coming standard across the range. Also standard throughout are Emergency Locking Retractors (ELR) seatbelts which come standard across the range for outer positions in the front cabin. For the younger apprentices, Child Restraint System (CRS) upper tether anchors are fitted to five door Wagons, for easy fitment of child seats.



Side impact beams.



Disc brakes.



Rigid frame and body structure.

It goes almost anywhere, does almost everything.

Don't think for a moment those rugged good looks are just for appearances. That large front bumper not only looks impressive it also leaves you with a great approach angle, giving you the clearance you need when lumbering over rough terrain.

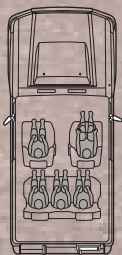
A big 180 litre dual fuel tank in Cab Chassis and Troop Carrier models add up to a super long potential 1500km cruising range, helped along by the economical running of the diesel V8. That means it can potentially take you all the way from Darwin to Alice Springs without stopping for a drink. The LandCruiser 70 Series comes with a dependable 5-speed transmission that has proven itself on Australia's toughest trails. So you have the ratios you need, plus a high and low range to confidently go up and down steep hills or negotiate loose, undulating trails.

It's also geared for comfortable highway cruising when you need to get promptly from A to B. Across the LandCruiser 70 Series, you'll find a seating and cabin arrangement that can carry almost everything and everybody you want. The two or three seat Cab Chassis lets you choose the tray that best suits your line of work. Troop Carriers can haul three, five or a whole army of eleven people. Or choose the Wagon with comfort and space for five adults plus all their gear. The wide opening rear doors on the Wagon and Troop Carrier make for easy loading and unloading of people and heavy gear.

The bodywork has been designed with plenty of glass area to maximise visibility. Come nightfall, powerful halogen lights show the way ahead, while GXL models have the addition of fog lamps which help show the way ahead in drizzly conditions.

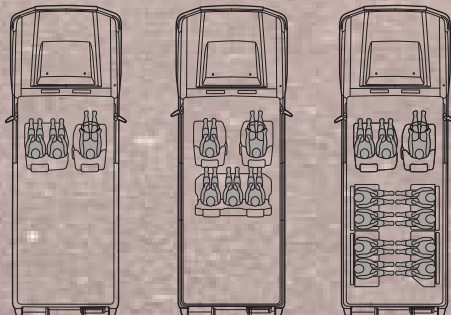


Five seat Wagon Seating Arrangement.



GXL/WorkMate

Three, five and eleven Seat Troop Carrier Seating Arrangements.

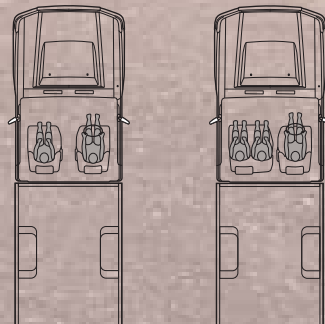


WorkMate

GXL

WorkMate

Cab Chassis Seating Arrangements.



GXL

GX/WorkMate

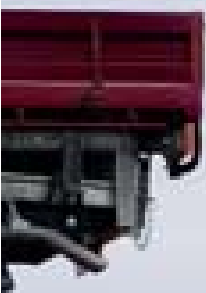
Troop Carrier GXL model shown.



The good oil on technology.

Once again Toyota has developed some remarkable engineering advances, adding further credence to the LandCruiser legend. The V8 turbocharged, intercooled diesel represents advanced and proven engineering from Toyota's vast experience with performance engines and diesel technology. It has been engineered to not only work harder but smarter, with quad cams and multi-valves which improve engine breathing and fuel efficiency.

A variable vane turbocharger manages the tenuous balance between back pressure and boost pressure. Basically, you want a smaller high revving turbocharger for response down low, but a larger capacity unit for power up top. This variable vane unit manages to achieve both, by altering the geometry of the turbine as revs increase. That adds up to more torque for towing and more power on highways. This thinking was first pioneered on muscle cars and now Toyota's making it work even harder.



Cab Chassis GXL model shown with optional Toyota Genuine tray body.

Mounted above the engine there's an air-to-air intercooler which cools the air going into the engine, by drawing cold air through the bonnet scoop. So with cooler, denser air going into the engine, you get more power out of it. The intercooler also means increased reliability through lower air intake temperatures. A cross over pipe draws boost from one bank of cylinders to the other, for a balanced turbocharging effect. There are also two fuel coolers, to keep the fuel charge concentrated.

Electronic direct injection and water cooled 'Exhaust Gas Recirculation' (EGR) help reduce emissions. Further efficiencies are gained by using lighter weight aluminium alloy pistons which reduce friction. Of course with less rotating weight, the engine revs freer and easier while engine wear is also reduced. Roller rockers also reduce friction improving fuel efficiency and reducing wear. This advanced V8 is also equipped with a catalytic converter which optimises exhaust flow and further reduces emissions. For longer life, the V8 features

Toyota's first ever oil scavenging pump which works together with the primary oil pump. The aluminium cylinder heads have been carefully heat treated for durability. Even the engine block has been cast using a higher grade graphite iron for greater strength but lighter weight. The crankshaft has been engineered using a special high strength carbon steel to reduce weight, while balance weights limit vibration and noise. Also helping it run quieter is an advanced gear and chain driven timing system.

So if you think an engine that gives you more power from less fuel, while satisfying Euro IV emissions regulations sounds too good to be true, better take one for a test run and find out for yourself.

Hard on the outside, easy on the inside.

Since you'll be doing long hours in your LandCruiser, it's good to know there are plenty of interior comforts going along for the ride.

Before you get started, an engine immobiliser is standard to help ensure that no one else can drive your LandCruiser 70 without your say so. The lockable glove box also helps keep your valuables in their place.

The air conditioning blower unit and cooler unit are integrated into one and positioned on the left passenger's side near the cowl, for easy access. The standard audio system incorporates an AM/FM tuner, USB audio input for some iPod^{®1}/MP3 players², Bluetooth^{™3} capabilities as well as the essential MP3 compatible CD player, so you can cram plenty on the one disc and let the music work overtime on those long hauls.

The hard wearing vinyl seating and vinyl floor covering is easy to clean, that's great when you're in dusty or muddy terrain. Or you may opt for the comfort of fabric trim in GXL models. Whichever way you go, the seats are built with deep cushioning and generous lumbar support to help soak up the bumps and reduce fatigue in tough going.

Maybe the cabin of your LandCruiser 70 is going to be like your on site office. So GXL models are also kitted out with comforts like remote central locking and power windows to make them easier to get along with. The comforts aren't just confined to the cabin. One thing you'll also come to appreciate in the LandCruiser 70 Wagon is the rear suspension which has been designed for drivability and comfort.

1 iPod[®] is a registered trademark of Apple Inc.

2 Not all devices will be compatible and functionality will vary depending on the device.

3 The Bluetooth[™] word mark is owned by The Bluetooth SIG, Inc. Not all devices will be compatible and functionality will vary depending on the device.



Cab Chassis GXL model shown.

A team of three specialists.



Cab Chassis GXL model shown with optional Toyota Genuine tray body.



Troop Carrier GXL model shown.



Wagon GXL model shown.

Cab Chassis

Take your pick between three equipment levels in this line-up. WorkMate is fitted out for practicality with a black front bumper, radiator grille and mirrors. 16" steel split rims make for easy tyre changes on site, while steel side steps help you aboard. The practical theme continues with vinyl floor and a bench/bucket seating arrangement trimmed in textured vinyl that comfortably fits three adults.

Next up, the GX gives you the addition of 16" alloy wheels, over fender flares and wide mudguards.

For more comfort, step up to the GXL Cab Chassis and you get a chrome grille, roof drip rails, doorhandles and chrome/painted front bumpers. Aluminium side steps and remote central locking help you aboard, while there are two buckets seats for comfort. Fabric seats, door trim inserts and carpet on the floor makes life a bit cosier. Power windows make for easy usage, while front fog lamps and variable intermittent wipers improve visibility. The standard audio unit is an MP3 compatible CD player with two speakers. The audio unit also has USB audio input for some iPods¹/MP3 players² and Bluetooth^{TM3} capabilities. As for optional extras, you can

add air conditioning for comfort, while front and rear differential locks mean better grip off road. All models come with standard driver and front passenger SRS airbags so you can enjoy all these great features in safety.

Troop Carrier

Two spec levels of Troop Carrier and three seating arrangements give you plenty of options. This big roomy design comes with two long front doors and a rear 60:40 split barn door arrangement which makes for easy loading.

WorkMate comes with a practical black grille, mirrors and front bumper, front and rear mudflaps and sliding rear windows. There's a barn-type tailgate for easy access and the 16" steel wheels have split rims for outback tyre changes. Upfront, there's a bucket seat along with a two seat bench layout, with an additional eight seats in the rear to carry

a total of eleven big adults, while an MP3 compatible CD player with AM/FM radio, USB input for some iPods¹/MP3 players² as well as Bluetooth^{TM3} capabilities, keeps them all entertained through two speakers. Seats and floor are vinyl. Troop Carrier three-seater is also available without the rear seats for increased cargo room.

Carry five adults in more comfort aboard the GXL Troop Carrier. It's kitted out with chrome/painted front and rear bumpers, chrome grille, door handles and roof drip rails complete the look. Remote central locking lets you into the comfort of fabric

seating with driver's and front passenger's bucket seats up front, totalling seating for five. Door trims have cloth inserts and floors are carpeted. Four speakers, a power antenna, power windows and variable speed intermittent wipers are standard along with fog lamps. Safety comes standard across the range with driver and front passenger SRS airbags featured in all models.

Having so much fitted as standard leaves little room for options. What you can add is air conditioning to keep you cool while front and rear differential locks give you sure-footed traction off-road.

Wagon

The Wagon is a big, roomy five door available in two equipment levels. WorkMate looks the goods with a practical black front bumper, grille and mirrors. It rides on 16" steel wheels while aluminium side steps help you aboard.

On the inside, WorkMate seats five, with bucket seats up front and vinyl floor for practicality. An MP3 compatible CD player with AM/FM radio, USB audio input for some iPods¹/MP3 players² as well as Bluetooth^{TM3} capabilities is accompanied by four speakers

for an excellent entertainment experience. In the GXL, the appearance steps up with chrome/painted front and rear bumpers, chrome grille, roof drip mouldings and chrome door handles. Wide 16" alloy wheels are capped off by over fender flares. Remote central locking opens the way to an interior with seating for five in fabric trimmed comfort and loop pile carpet. The stereo system comes with a power antenna, while the windows are power operated.

And since the wagon doubles as a family runabout you won't want to compromise on safety. Driver and front passenger SRS airbags are a standard feature. You may consider the optional air conditioning for added comfort. Also optional are front and rear differential locks for extra traction when the going gets tough.

1 iPod® is a registered trademark of Apple Inc.

2 Not all devices will be compatible and functionality will vary depending on the device.

3 The Bluetooth™ word mark is owned by The Bluetooth SIG, Inc. Not all devices will be compatible and functionality will vary depending on the device.



Toyota Genuine Accessories. For life on the land.



LandCruiser 70 Series Cab Chassis GXL model shown in Merlot Red, accessorised with steel bull bar, side rails (front and side pair), superwinch, driving lights, headlamp covers, bonnet protector, front weathershields, canvas seat covers and galvanised steel colour-coded (with chequer plate floor) tray body. All sold separately.

Toyota Genuine Accessories. For life on the land.

Enhance your LandCruiser 70 Series' practicality and individuality through Toyota's broad range of Toyota Genuine Accessories, all developed to strict quality and performance standards and backed by our Toyota warranty*.



LandCruiser 70 Series Cab Chassis GXL model shown in Merlot Red, accessorised with Steel Bull Bar, Side Rails (Front and Side Pair), Superwinch, Driving Lights, Headlamp Covers, Bonnet Protector, Front Weathershields, Canvas Seat Covers and Galvanised Steel Colour-Coded (with Checker Plate Floor) Tray Body. All sold separately.



Airbag Compatible Alloy Bull Bar With Driving Lights & Superwinch
(sold separately)



Airbag Compatible Steel Bull Bar With Driving Lights & Superwinch
(sold separately)



Side Rails - Front & Side Pair
(sold separately)



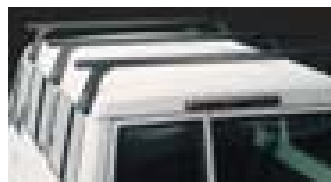
Bonnet Protector & Headlamp Covers
(sold separately)



Front Weathershields



Sunvisor (unpainted)



Heavy Duty Roof Racks - Two Bar Set (With Third Bar) (sold separately) Available on Wagon & Troop Carrier models



Cargo Barrier
Available on Wagon & Troop Carrier models



Heavy Duty Galvanised Steel Tray Body (Colour Coded) - Checker Plate Floor
Available on Cab Chassis models



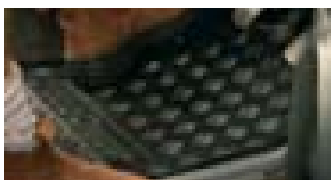
Heavy Duty Alloy Tray Body
Available on Cab Chassis models



Towbar 3500kg (Braked), 750kg (Unbraked)¹, Towball & Trailer Wiring Harness (sold separately)



Alloy Wheel Lock Nut Set



All Weather Rubber Floor Mats - Front



Display Audio System



Satellite Navigation² Audio System



Tyre Pressure Monitoring System

TOYOTA GENUINE ACCESSORIES ARE COVERED BY OUR TOYOTA WARRANTY*
Some Toyota Genuine Accessories are not applicable to all models. See your Toyota dealer for advice regarding Toyota Genuine Accessories. Pictured Accessories are all sold separately. For a comprehensive guide on the entire range of Toyota Genuine Accessories, visit our website at accessories.toyota.com.au.

1 Towing capacity subject to regulatory requirements, towbar design, vehicle design and towing equipment limitations.

2 Current Navigation mapping database encompasses major capital and primary national road networks, as well as offering some coverage of regional areas.

* All Toyota Genuine Accessories purchased and fitted to a Toyota are warranted for the remainder of the New Vehicle Warranty or 12 months, whichever is greater. Toyota Genuine Accessories purchased from an authorised Toyota Dealer over the counter are warranted from the date of purchase for one year. Conditions apply. The Toyota Genuine Accessories Warranty does not limit and may not necessarily exceed your rights under the *Competition and Consumer Act 2010*.

The Toyota Advantage



Pay no more from one logbook service to the next with Toyota Service Advantage.

New Toyotas come with Toyota Service Advantage. That means you'll pay the same low capped-price from one logbook service to the next for the first three years or 60,000km, whichever comes first¹. So you'll enjoy the peace of mind of knowing in advance what your servicing costs will be. Better still, your Toyota will be serviced by Toyota-trained Technicians who know your vehicle inside out and only ever use Toyota Genuine Parts. For the full benefits of Toyota Service Advantage consult a Toyota Dealer or visit advantage.toyota.com.au

TOYOTA WARRANTY

The Toyota Guarantee.

We are confident that all of our vehicles will be as reliable and dependable as you need them to be. We understand that a new car purchase can often be a big decision. You need to feel confident that not only are you making the right decision now, but you are making a decision that won't end up costing you dearly in the future. That is why every new Toyota is proudly backed by a 3 year/100,000km warranty² (whichever occurs first), which provides you with peace of mind and carefree motoring.

TOYOTA EXTRA CARE

Extend your peace of mind.

The Toyota Extra Care Extended Factory Warranty allows you to extend your original factory warranty for up to 3 years and is available on most new and used Toyota vehicles, providing you with protection from unexpected repair bills and more importantly a little extra peace of mind³. Should you break down we also offer Roadside Assist, a reliable breakdown service with round the clock reassurance and assistance. Toyota Extra Care is that extra helping hand when you need it most. For more details visit toyotaextracare.com.au

TOYOTA INSURANCE

All the insurance coverage you could need.

Could you afford costly repairs or having to replace your vehicle altogether? At Toyota Insurance⁴ we understand that your vehicle is a critical part of your life and can offer you a motor insurance solution designed specifically for Toyota vehicles. Our Comprehensive Motor Vehicle Insurance benefits include⁴:

- Replacement of your Toyota vehicle with a new Toyota following a total loss if your vehicle is less than 3 years old and has travelled less than 100,000km
- Genuine new Toyota parts replacement promise for Toyota vehicles less than 5 years old
- Genuine Toyota Quality Repair Guarantee on authorised repairs for the duration of your vehicle ownership

Toyota Insurance also offers optional Finance Gap Insurance, Payment Protection and Extended Warranty Insurance⁴. Visit toyotainsurance.com.au for more details about the coverage we offer.



Finance to get you in the driver's seat.

Toyota Financial Services⁵ can offer you a range of easy vehicle finance options available for you to organise conveniently at your preferred Toyota dealership. Whether you require a simple personal vehicle loan, a novated lease for you or your employees, or serviced leasing on your small-business tool of trade vehicles, we can help. Toyota Financial Services is the best way to finance your Toyota, visit toyotafinance.com.au to find out why.

1 Standard scheduled servicing (normal operating conditions) up to the first 6 services. Excludes Government and Rental vehicles. Contact your Toyota Dealer or go to advantage.toyota.com.au for other exclusions and eligibility.

2 New Vehicle Warranty expires 3 years from date of first delivery or 100,000 kms, whichever occurs first. Refer to the warranty conditions. The New Vehicle Warranty does not limit and may not necessarily exceed your rights under the *Competition and Consumer Act 2010*.

3 The Toyota Extra Care Extended Factory Warranty Agreement is between Toyota Motor Corporation Australia Limited ABN 009 686 097 (TMCA) and the purchaser of the motor vehicle and is administered by Toyota Financial Services (TFS) a division of Toyota Finance Australia Limited ABN 48 002 435 181 on behalf of TMCA. Terms and conditions apply. Available on most new and used Toyota vehicles up to 8 years old that have travelled less than 120,000 kms. For more information visit toyotaextracare.com.au

4 Terms and conditions apply. Before making a decision about any of the insurance products, please refer to the current Product Disclosure Statement (PDS) for the relevant product available from participating dealers, via the Toyota Insurance website at toyotainsurance.com.au or by calling 137 200. Toyota Insurance is a division of Aioi Nissay Dowa Insurance Co., Ltd. ABN 39 096 302 466 AFSL Number 254489 (Andia). Nothing within the Toyota Insurance Extended Warranty products affects any statutory rights you may have under the *Competition and Consumer Act 2010*

5 Toyota Financial Services is a division of Toyota Finance Australia Limited ABN 48 002 435 181, Australian Credit Licence No 392536.

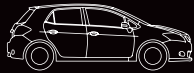
IMPORTANT NOTICE PLEASE READ: Toyota Australia uses its best endeavours to ensure this material is correct when published. You must check with your authorised Toyota dealer when ordering to ensure the vehicle with your chosen specifications, equipment and colour is available and that the vehicle can be delivered within the timeframe suitable to you. When ordering accessories, you must check with your authorised Toyota dealer to ensure the accessory's design, features and colours are available and will fit your vehicle. Colours displayed here are a guide only and may vary from actual colours due to printing/display processes. Certain accessories when fitted will require the removal of standard equipment. Standard equipment may be retained by Toyota Australia. Toyota Australia reserves the right to change, without notice, at any time prices, colours, materials, equipment, specifications and discontinue colours/models. To the extent permitted by law, Toyota Australia will not be liable for any damage, loss or expense incurred as a result of reliance on this material in any way. Distributed nationally (other than in Western Australia) by Toyota Motor Corporation Australia Limited ABN 64 009 686 097, 155 Bertie St, Port Melbourne 3207. Material distributed in Western Australia by or on behalf of Prestige Motors Pty Ltd (for vehicles) and by Eastpoint Pty Ltd (for parts/accessories). Toyota Australia makes no warranties regarding (and will not be liable for) the accuracy of materials distributed in Western Australia. PART NUMBER LC700711. VALID: X1947-2. PRINTED: JULY 2011. GTO1399.

“We are a group of passionate perfectionists who can’t let well enough alone...That’s Toyota. That’s the spirit. And that’s our contribution to the world.”

— Eiji Toyoda



Yaris



Corolla



Rukus



Prius



Camry



Hybrid Camry



Aurion



Tarago



RAV4



Kluger



FJ Cruiser



Prado



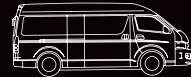
LandCruiser 200 Series



LandCruiser 70 Series



HiLux



HiAce Commuter Bus



HiAce Van



Coaster